

СООБЩЕНИЯ
ОБЪЕДИНЕННОГО
ИНСТИТУТА
ЯДЕРНЫХ
ИССЛЕДОВАНИЙ
ДУБНА



017711697

E2 - 9837

P.Raychaudhuri

**MASSIVE LEPTON PAIR PRODUCTION
IN MASSIVE QUANTUM ELECTRODYNAMICS**

1976

RANGE OF JINR PUBLICATIONS

The preprints and communications of the Joint Institute for Nuclear Research (JINR) are considered to be original publications. They are published in accordance with Article 4 of the JINR Statut. Difference between the preprints and communications consists in that text of the preprint will be published in future in one of scientific journals or in aperiodic collections.

Indexing

The preprints, communications and deposited publications of the JINR have a single numbering (four last figures of the index).

The first sign of the index - a letter, denotes the language the paper is published in:

"P" - published in Russian;

"E" - published in English;

"D" - published both in Russian and in English.

The figure following the letter denotes the subject category of the given publication. List of subject categories of the JINR publications is sent periodically to the recipients.

Above-described index is placed in the right upper corner of the cover and on the title-page of each publication.

References

In bibliographical references to the JINR preprints and communications we recommend to indicate: author's initials and name, an abbreviation of the name of the institute, index, place and year of publication.

An example of bibliographical reference:

I.Ivanov. JINR, P2-4985, Dubna, 1971.

E2 - 9837

P.Raychaudhuri

**MASSIVE LEPTON PAIR PRODUCTION
IN MASSIVE QUANTUM ELECTRODYNAMICS**

INTRODUCTION

The study of lepton pair production in hadron-hadron interactions may provide important indication about the structure of hadrons and about the range of applicability of several popular theoretical ideas, e.g., partons, "multi-peripheralism", current algebra and light-cone dominance. If we consider the production of lepton pair by virtual photon then the lowest order in the electromagnetic coupling constant, the process

$$p + p \rightarrow (\text{Virtual } \gamma) + \text{anything}$$

$$\ell^+ + \ell^- + \text{anything}$$

represents the inclusive production of a virtual photon and it has the same kinematical structure as one particle inclusive reaction. It will be interesting to see whether the cross section shows the same features that is observed in purely hadronic inclusive cross section both from the theoretical point of view and experimental point of view.

From the point of view of the parton model Drell and Yan ^{/1/} predict the differential cross section in a simple scaling form for the $pp \rightarrow \mu^+ + \mu^- + \text{anything}$ as

$$\frac{d\sigma}{dQ^2} = \left(\frac{4\pi\alpha^2}{3Q^2} \right) \frac{1}{Q^2} r W(r),$$

where $r = \frac{Q^2}{s} < 1$.

In the parton model the scaling is obtained by impulsive approximation, i.e., by assuming that the annihilating partons are moving as free particles.

The general idea of the Drell-Yan model is that the production of a massive photon in an inclusive cross section can be visualized as in fig. 1.

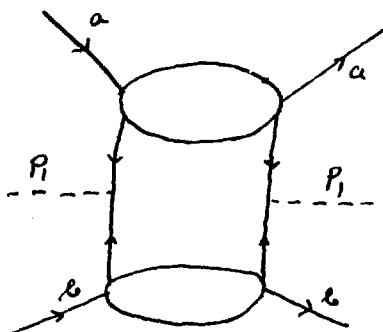


Fig. 1. The Drell-Yan structure.

The photon is produced in these types of diagrams only when a quark and antiquark annihilates. Drell and Yan conjectured that the process like (1) can be viewed in an approximate infinite momentum frame as the annihilation of point like constituents into $\mu^+ + \mu^-$ pairs.

Recently, Halliday ^{/2/} considered massive μ pair production in massive electrodynamics like the diagrams shown in fig.1 and has found

$$\frac{d\sigma}{dQ^2} = \left[\frac{d\sigma}{dQ^2} \right]_{D.Y.} f(r, \xi),$$

where

$$f(r, \xi) \equiv \int d\alpha d\beta \delta(\alpha\beta - r) \exp \left[\left(\frac{81\xi}{2\ln\xi} \ln^2 \alpha \right)^{1/3} + \left(\frac{81\xi}{2\ln\xi} \ln^2 \beta \right)^{1/3} \right]$$

and as $Q^2 \rightarrow \infty$, $\xi \rightarrow -\infty$, he has obtained an asymptotic answer marginally greater than the Drell-Yan formula.

Sanda and Suzuki ^{/3/} applied the current algebra technique to study the hadronic inclusive reactions and massive lepton pairs from hadron-hadron collisions. They predicted a linear growth of the cross section in s for massive lepton pair production. They have calculated cross section for massive lepton pair by ignoring the current conservation. Brandt and Preparata and their collaborators ^{/4/} used light cone expansion technique to calculate the massive lepton pair from proton-proton collisions. They also predicted the same linear growth of the cross section in s .

The massive lepton pair production in high energy hadron collisions was studied also by Subbarao ^{/5/} in ABFST multiperipheral model. The cross section for point electromagnetic coupling is given by

$$\frac{d\sigma}{dQ^2} = \frac{1}{Q^4} f\left(\frac{s}{Q^2}\right),$$

where $Q^2 \gg M^2$, \sqrt{s} is the centre of mass energy of the colliding protons, Q is the mass of the lepton pair, and M is the nucleon mass.

Thacker ^{/6/} studied also $pp \rightarrow \mu^+ + \mu^- + \text{anything}$ in massive electrodynamics by using general method for treating the typical phase space integration with arises in a subsequent model calculation and showed cancellation of a linear growth of the cross section in s among several graphs. The nature of cancellation emphasizes the importance of taking proper account of gauge invariance. In the previous paper ^{/7/} when we have studied $pp \rightarrow (\frac{p}{\pi}) + x$, we have shown the cancellation occurs for a linear growth of cross section among other graphs in massive electrodynamics. For the inclusive process $pp \rightarrow (\frac{p}{\pi}) + x$ in a low order Feynman diagram we have found for large p_T and \sqrt{s}

$$E \frac{d^3\sigma}{d^3p_1} \propto \frac{1}{p_T^4} \ln^2 s f(x_1, y_1),$$

where f is a function of x_1, y_1 . In view of this calculation we would like to study the production of massive μ pairs in high energy proton-proton scattering. We will show that for the graph shown below the differential

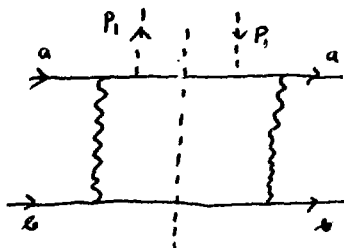


Fig. 2. Low order graphs for $p + p \rightarrow l^+ + l^- + X$.

cross section for $p + p \rightarrow \mu^+ + \mu^- + \text{anything}$ can be written as

$$\frac{d\sigma}{dQ^2} = \left(\frac{4\pi a^2}{3}\right) \cdot \frac{g^4 \tau^2}{(Q^2)^2} f(x_1, y_1, \tau).$$

This behaviour is similar to the behaviour of Drell-Yan mechanism.

II. KINEMATICS

The process of interest $p + p \rightarrow \gamma$ (virtual) + anything
 $\rightarrow l^+ + l^- + \text{anything}$

is shown below

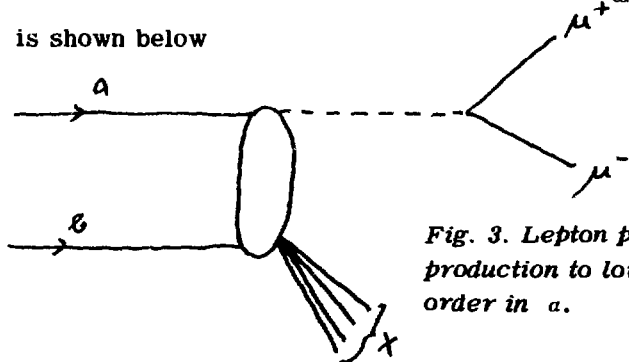


Fig. 3. Lepton pair production to lowest order in a .

The initial hadrons (a,b) have momentum a^μ and b^μ . We are interested in the region where $s \rightarrow \infty$ and $p_1^2 = \tau s = Q^2 \rightarrow \infty$

$$s = 2ab, \quad sx_1 = 2bp_1, \quad sy_1 = 2ap_1.$$

The possibility of the mass and energy of the final hadronic state requires $x_1 < 1, y_1 < 1, 1 - x_1 - y_1 + \epsilon > 0$ and

$$x_1 y_1 = \tau + \frac{p_1^2}{s}.$$

The differential cross section for $\mu^+ + \mu^-$ pair can be written as

$$\frac{d\sigma}{dp_1^2} = \frac{a^2}{8\pi^4} \cdot \frac{1}{\{s(s - 4M^2)\}^{1/2}} \cdot \frac{1}{p_1^2} W_{\mu\nu} L^{\mu\nu}, \quad (2.1)$$

where $L_{\mu\nu}$ is the leptonic tensor defined by

$$L_{\mu\nu} = \int \frac{d^3q_1}{2q_{10}} \frac{d^3q_2}{2q_{20}} \delta^4(q_1 + q_2 - p_1) T_\gamma [\hat{q}_1 \gamma_\mu \hat{q}_2 \gamma_\nu] \quad (2.2)$$

and the hadronic tensor $W_{\mu\nu}$ defined by

$$W_{\mu\nu} = \sum (2s)^4 \delta^4(a + b - p_1 - p_n) \langle ab | J_\mu(0) | n \rangle \langle n | J_\nu(0) | ab \rangle, \quad (2.3)$$

where spin average of the proton is implied.

Since leptonic tensor is conserved we can write

$$L_{\mu\nu} = (p_{1\mu} p_{1\nu} - g_{\mu\nu} p_1^2) L \quad (2.4)$$

where $L = \frac{2\pi}{3}$.

Again since the hadronic tensor is also conserved only $g_{\mu\nu} p_1^2$ will contribute. Therefore the differential cross section for $\mu^+ + \mu^-$ pair can be written as

$$\frac{d\sigma}{dQ^2} = \left(\frac{1}{12\pi^3} \frac{a^2}{[s(s - 4M^2)]^{1/2}} \right) (-W_\mu^\mu). \quad (2.5)$$

Now we shall calculate W_μ^μ for the lowest order Feynman diagrams which are shown below

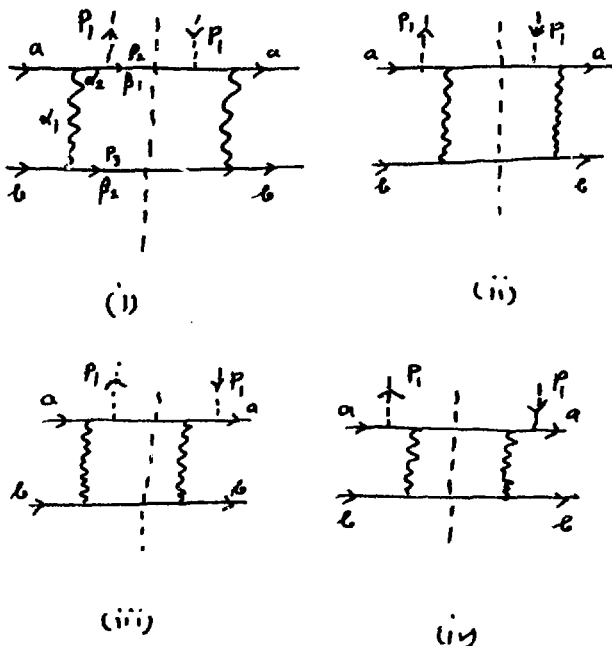


Fig. 4. Lowest order graphs for $p + p \rightarrow l^+ + l^- + X$.

In our calculation we shall omit a common constant term which will appear for every diagram. We study the W_μ^μ function as a function of $s, x, y,$ and τ

$$W_\mu^\mu = \int |M_{fi}|^2 \delta^4(a + b - p_1 - p_2 - p_3) d^4 p_2 d^4 p_3 \delta(p_2^2 - m^2) \delta(p_3^2 - m^2),$$

where

$$M_{fi} = [\bar{u}(a) \{ \gamma_\nu \frac{\hat{p}_1 + \hat{p}_2 + m}{(p_1 + p_2)^2 - m^2 + i\epsilon} \gamma_\mu +$$

$$+ \gamma_\nu \frac{(\hat{a} - \hat{p}_1) + m}{(a - p_1)^2 - m^2 + i\epsilon} \gamma_\mu \{ u(p_2) \} \frac{1}{(b - p_3)^2 - \mu^2 + i\epsilon} \times$$

$$\times [\bar{u}(b) \gamma_\nu u(p_3) \},$$

(2.7)

and

$$|M_{fi}|^2 = \frac{1}{\{(b-p_3)^2 - \mu^2 + i\epsilon\}^2} \text{Sp}\{(\hat{a}+m)M(\hat{p}_2+m)\bar{M}\} \text{Sp}\{(\hat{b}+m)\gamma_\nu(\hat{p}_3+m)\gamma_{\nu'}\}, \quad (2.8)$$

where

$$M = \gamma_\nu \frac{(\hat{p}_1 + \hat{p}_2) + m}{(p_1 + p_2)^2 - m^2 + i\epsilon} \gamma_\mu + \gamma_{\nu'} \frac{(\hat{a} - \hat{p}_1) + m}{(a - p_1)^2 - m^2 + i\epsilon} \gamma_\mu. \quad (2.9)$$

We shall neglect mass terms in the numerator because these do not contribute to the leading term. Equation (2.7) can be written as

$$\begin{aligned} |M_{fi}|^2 &= \frac{1}{\{(b-p_3)^2 - \mu^2 + i\epsilon\}^2} \text{Sp}[\hat{b}\gamma_{\nu'}\hat{p}_3\gamma_{\nu'}] \times \\ &\times \text{Sp}\left[\frac{\hat{a}\gamma_{\nu'}\hat{s}_1\gamma_\mu\hat{p}_2\gamma_\mu\hat{s}_1\gamma_{\nu'}}{G_1^2} + \frac{\hat{a}\gamma_{\nu'}\hat{s}_1\gamma_\mu\hat{p}_2\gamma_{\nu'}\hat{s}_2\gamma_{\mu'}}{G_1 G_2} + \right. \\ &\left. + \frac{\hat{a}\gamma_\mu\hat{s}_2\gamma_{\nu'}\hat{p}_2\gamma_\mu\hat{s}_1\gamma_{\nu'}}{G_1 G_2} + \frac{\hat{a}\gamma_\mu\hat{s}_2\gamma_{\nu'}\hat{p}_2\gamma_{\nu'}\hat{s}_2\gamma_{\mu'}}{G_2^2}\right] = \end{aligned} \quad (2.10)$$

$$= A + B + C + D,$$

where $s_1 = p_1 + p_2$, $s_2 = a - p_1$, $G_1 = (p_1 + p_2)^2 - m^2 + i\epsilon$,

$$G_2 = (a - p_1)^2 - m^2 + i\epsilon.$$

where A, B, C and D represent figures 4 (i), (ii), (iii), (iv), respectively.

For the delta function and propagator we shall use a representation, e.g.,

$$\frac{1}{\{(b-p_3)^2 - \mu^2 + i\epsilon\}} = \frac{1}{i} \int_0^\infty da_1 e^{ia_1\{(b-p_3)^2 - \mu^2 + i\epsilon\}}, \quad (2.11)$$

$$\delta(p_2^2 - m^2) = \frac{1}{2\pi} \left[\int_0^\infty e^{i\beta_1(p_2^2 - m^2 + i\epsilon)} d\beta_1 + \int_0^\infty e^{-i\beta_1(p_2^2 - m^2 - i\epsilon)} d\beta_1 \right].$$

To make computations easier before calculating spur we integrate over p_2 , then we will have for figure 4 (i)

$$\begin{aligned} & \int A \delta(p_2^2 - m^2) \delta(p_3^2 - m^2) d^4 p_3 \Big|_{p_2 = a + b - p_1 - p_3} = \\ & = \frac{1}{(2\pi)^2} \int a_1 a_2 d\beta_1 d\beta_2 d\alpha_1 d\alpha_2 (A^0) \times \\ & \times e^{i[p_3^2(\alpha_1 + \alpha_2 + \beta_1 + \beta_2) - 2p_3 \{(\alpha_1 + \alpha_2)b + \alpha_2 a + \beta_1(a + b - p_1)\}]} d^4 p_3 \times \\ & \times e^{i\{a_2 + \beta_1(1 - x_1 - y_1 + t)\}} e^{i\{(\beta_1 + \beta_2 + \alpha_2)(-m^2 + i\epsilon) - a(\mu^2 - i\epsilon)\}} \end{aligned}$$

Similarly there will be three other terms interacting β_1, β_2 by $-\beta_1, -\beta_2$.

From (2.9) we have

$$\begin{aligned} A = & -64[2(ab)\{(ab)(2p_3 a + p_3 b + p_3 p_1 - p_3^2) - \\ & - (ap_1)(2ap_3 + bp_3) - (bp_1)(ap_3 + bp_3)\} - \\ & - (ap_3)\{2(ab)(ap_3) - (ab)(p_1 p_3) + 4(bp_3)(ab) + (ap_3)(bp_1 - bp_3)\} - \\ & - 2(bp_3)\{(ab)(bp_3) - (ap_3)(bp_3 + ap_1 - p_1 p_3)\} + \\ & + p_3^2\{(ab)(4ap_3 + 3p_3 b + p_3 p_1 - p_3) + ap_3(bp_1 - bp_3)\}. \end{aligned} \quad (2.12)$$

After integration over p_3 , we can write (2.11) as,

$$\frac{1}{(2\pi)^2} \int \frac{a_1 a_2 d a_1 d a_2}{X^2} d\beta_1 d\beta_2 \mathcal{D}(a_1, a_2, \beta_1) \times$$

$$\times e^{i s \left\{ \beta (1-x_1-y_1+r) \left(1 - \frac{\beta_1}{X}\right) + \frac{a_2(\beta_1+\beta_2)}{X} - \frac{(a_1+a_2)\beta_1}{X} (1-x_1) + \frac{a_2\beta_1}{X} (1-y_1) \right\}}$$

$$\times e^{i \left\{ (\beta_1+\beta_2+a_2)(-m^2+i\epsilon) - a_1(\mu^2-i\epsilon) \right\}}, \quad (2.13)$$

where \mathcal{D} is a function of a_1 , a_2 and β_1 and $X = a_1 + a_2 + \beta_1 + \beta_2$.

Now applying the Mellin transform, we get

$$\frac{1}{(2\pi)^2} \int \frac{a_1 a_2 d a_1 d a_2 d\beta_1 d\beta_2}{X^2} \mathcal{D}(a_1, a_2, \beta_1) \times \quad (2.14)$$

$$\times \frac{i}{2} \int_{\delta-i\infty}^{\delta+i\infty} \frac{d j (-i s F)^j}{\delta - i\infty} e^{i \left\{ (\beta_1+\beta_2+a_2)(-m^2+i\epsilon) - a_1(\mu^2-i\epsilon) \right\}},$$

where

$$F = \beta (1-x_1-y_1+r) \left(1 - \frac{\beta_1}{X}\right) + \frac{a_2(\beta_1+\beta_2)}{X} - \frac{(a_1+a_2)}{X} \beta_1 (1-x_1) +$$

$$+ \frac{a_2 \beta_1}{X} (1-y_1).$$

After integration over p_3 , the function $\mathcal{D}(a_1, a_2, \beta_1)$ contains a term without β_1 and a_2 . In that case if we scale

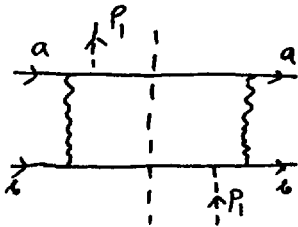
$$(a_1, \beta_2) = \lambda (a_1, \beta_2)$$

and integrating over λ and taking $\lambda \rightarrow 0$ we will get

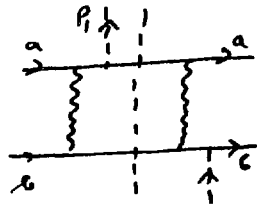
$$W_\mu^\mu \sim \text{constant}.$$

We see that when we add up three other diagrams the terms $W_\mu^\mu \sim \text{constant}$ are cancelled. This is due to gauge invariance.

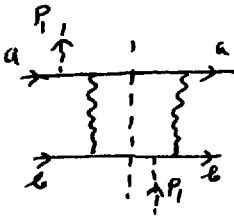
Similarly, we have the same result interchanging a by b. The diagrams which are shown below will also contribute to the differential cross section for $p + p \rightarrow l^+ + l^- + \text{anything}$



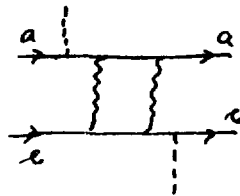
(v)



(vi)



(vii)



(viii)

But they will give us $W_{\mu}^{\mu} \sim \frac{1}{s}$.

So we see that in massive quantum electrodynamics $W_{\mu}^{\mu} \sim \frac{1}{s}$ and which gives the differential cross section for $p + p \rightarrow l^+ + l^- + \text{anything}$ for the lowest order is of the form

$$\frac{d\sigma}{dQ^2} \approx \frac{\alpha^2 g^4}{(Q^2)^2} r^2 f(x_1, y_1, r) \ln\left(\frac{s}{\mu^2}\right).$$

This behaviour is the same as in scalar gluon theory, but the function $f(x, y, \tau)$ is different from the scalar gluon theory.

III. DISCUSSIONS

In the previous calculation for $p+p \rightarrow (\frac{p}{\pi}) + \text{anything}$ we have seen that for $\sigma \sim s$ cancellation occurs among different graphs. This is due to gauge invariance and current conservation. Our calculation shows that to get the gauge invariant result, it is necessary to sum the whole set of diagrams granted in a well defined way.

In the quark parton model Bjorken scaling is obtained by applying impulse approximation, i.e., by assuming that the partons (quarks) are moving as free particles. From the field theoretical point of view one of the most interesting field theory to explain the Bjorken scaling in deep inelastic electron scattering is the asymptotically free theory^{/8/} of non-Abelian Yang-Mills field, although in that theory Bjorken scaling is violated logarithmically. Again if the strong interactions are described by a field theory of this kind, it may be possible to calculate some quantities which depend on the details of strong interaction dynamics using perturbation theory. Scaling is also obtained in massive neutral vector gluon theory in deep inelastic electron scattering when $g^2 \ln q^2 \ll 1/9$..

However we have demonstrated here that in massive neutral vector gluon theory the inclusive processes such as $p+p \rightarrow (\frac{p}{\pi}) + X$ and $p+p \rightarrow (\ell^+ + \ell^-) + X$ give

$$E \frac{d^3\sigma}{d^3p} \sim \frac{1}{p_T^4} \quad (3.1)$$

and

$$\frac{d\sigma}{dQ} \sim \frac{1}{Q^3}.$$

At present, experimental result ^{/10/} (see fig.5) for $p + p \rightarrow \mu^+ + \mu^- + X$ shows the behaviour

$$\frac{d\sigma}{dQ} \sim \frac{1}{Q^{5.4}} \quad (3.2)$$

Similarly for the non-Abelian gauge theory we expect the same result like equation (3.1) but which differs only by constant that depends on the group structure.

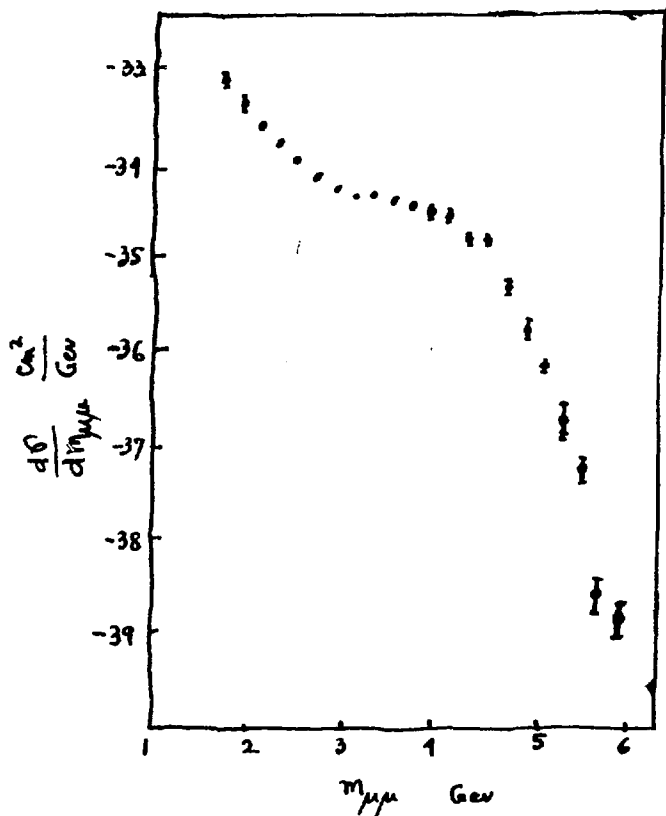


Fig. 5. Experimental result for the process $p + p \rightarrow \mu^+ + \mu^- + \text{anything}$.

ACKNOWLEDGEMENTS

The author is thankful to the Directorate of JINR and the Laboratory of Theoretical Physics for kind hospitality. The author is grateful to Dr. A.V.Efremov for numerous discussions. The author is also thankful to Professor D.V.Shirkov for helpful suggestions.

REFERENCES

1. S.D.Drell and T.M.Yan. *Phys. Rev. Lett.*, 25, 316 /1969/.
2. I.G.Halliday. CERN Preprint Ref. TH 2044 (CERN), 1975.
3. A.Sanda and M.Suzuki. *Phys. Rev.*, D4, 141 /1971/; *Phys. Rev.*, D3, 2019 /1971/.
4. G.Altarelli, R.Brandt and G.Preparata. *Phys. Rev. Lett.*, 26, 42 /1971/. R.Brandt and G.Preparata. *Phys. Rev.*, D6, 619 /1972/. R.Brandt, G.Preparata and A.Kaufman. *Phys. Rev.*, D10, 146 /1974/.
5. K.Subbarao. *Phys. Rev.*, D8, 1498 /1973/.
6. H.B.Thacker. *Phys. Rev.*, D9, 2580 /1974/.
7. P.Raychaudhuri. JINR Preprint, E2-9838, Dubna, 1976.
8. D.Gross and F.Wilczek. *Phys. Rev.*, D9, 980 /1974/. H.D.Politzer. *Phys. Rev.Lett.*, 30, 1346 /1973/.
9. V.N.Gribov and L.N.Lipatov. *Phys. Lett.*, 37B, 78 /1971/.
10. A.V.Efremov. Proc. of Warshaw Conference, 1975,

Received by Publishing Department
on June 2, 1976.



SUBJECT CATEGORIES OF THE JINR PUBLICATIONS

Index	Subject
1.	High energy experimental physics
2.	High energy theoretical physics
3.	Low energy experimental physics
4.	Low energy theoretical physics
5.	Mathematics
6.	Nuclear spectroscopy and radiochemistry
7.	Heavy ion physics
8.	Cryogenics
9.	Accelerators
10.	Automatization of data processing
11.	Computing mathematics and technique
12.	Chemistry
13.	Experimental techniques and methods
14.	Solid state physics. Liquids
15.	Experimental physics of nuclear reactions at low energies
16.	Health physics. Shieldings
17.	Theory of condensed matter

Conditions of Exchange

The preprints and communications of the Joint Institute for Nuclear Research are distributed free of charge on the mutual exchange basis to the universities, institutes, libraries, scientific groups of more than 50 countries.

Besides the regular distribution on the exchange basis, the Publishing Department fulfils annually about 4000 individual requests for our preprints and communications. The index of our publication must be obligatory indicated in such requests.

Addresses

Letters on all the questions concerning the exchange of publications as well as requests for individual publications are to be sent at the address:

*Publishing Department
Joint Institute for
Nuclear Research
Head Post Office,
P.O. Box 79
101000 Moscow,
U.S.S.R.*

We kindly ask to send all the publications on the exchange basis and also free of charge subscriptions to scientific journals at the address:

*Scientific-Technical Library
Joint Institute for
Nuclear Research
Head Post Office
P.O. Box 79
101000 Moscow,
U.S.S.R.*

Издательский отдел Объединенного института ядерных исследований.
Заказ 21742. Тираж 680. Уч.-изд. листов 0,84.

Редактор Э.В.Ивашкевич

Подписано к печати 16.7.76 г.

Корректор Н.А.Кураева