

**1 of 1**

**RECEIVED**

**SEP 12 1994**

**OSTI**

**WORK PLAN FOR GROUND WATER  
ELEVATION DATA RECORDER/MONITOR  
WELL INSTALLATION AT  
GUNNISON, COLORADO**

**July 1994**

**NOT INTENDED FOR PUBLIC RELEASE**

**This report has been reproduced from the best available copy.**

**Number of pages in this report: 17**

**For availability contact:**

**Office of Scientific and Technical Information  
P.O. Box 62  
Oak Ridge, TN 37831  
(615) 576-8401**

**WORK PLAN FOR GROUND WATER  
ELEVATION DATA RECORDER/MONITOR WELL  
INSTALLATION AT  
GUNNISON, COLORADO**

**July 1994**

**DISCLAIMER**

This report was prepared as an account of work sponsored by an agency of the United States Government. Neither the United States Government nor any agency thereof, nor any of their employees, makes any warranty, express or implied, or assumes any legal liability or responsibility for the accuracy, completeness, or usefulness of any information, apparatus, product, or process disclosed, or represents that its use would not infringe privately owned rights. Reference herein to any specific commercial product, process, or service by trade name, trademark, manufacturer, or otherwise does not necessarily constitute or imply its endorsement, recommendation, or favoring by the United States Government or any agency thereof. The views and opinions of authors expressed herein do not necessarily state or reflect those of the United States Government or any agency thereof.

**Prepared for  
U.S. Department of Energy  
UMTRA Project Office  
Albuquerque, New Mexico**

**Prepared by  
Jacobs Engineering Group Inc.  
Albuquerque, New Mexico**

**MASTER**

**DISTRIBUTION OF THIS DOCUMENT IS UNLIMITED**

875

---

**TABLE OF CONTENTS**

<b><u>Section</u></b>	<b><u>Page</u></b>
1.0 INTRODUCTION . . . . .	1
1.1 Purpose . . . . .	1
1.2 Data collection objectives . . . . .	1
2.0 MONITOR WELL AND DATA LOGGER INSTALLATION TASKS . . . . .	2
2.1 Monitor well and data logger locations . . . . .	2
2.2 Permits, clearances, and access agreements . . . . .	4
2.3 Site conditions . . . . .	4
2.4 Well and data logger installation methods . . . . .	4
2.5 Well development . . . . .	6
2.6 Surveying . . . . .	6
2.7 Water sampling and analysis . . . . .	6
2.8 Site restoration . . . . .	6
2.9 Field documentation . . . . .	7
2.10 Anti-contamination measures . . . . .	7
3.0 HEALTH AND SAFETY . . . . .	8
3.1 Local contingencies and contacts . . . . .	8
3.2 Health and safety audits . . . . .	8
4.0 WELL AND DATA LOGGER INSTALLATION TASK SCHEDULE . . . . .	11
5.0 REFERENCES . . . . .	12

---

**LIST OF FIGURES**

<b><u>Figure</u></b>		<b><u>Page</u></b>
1	Proposed monitor well and data logger location map in the processing site vicinity, Gunnison, Colorado . . . . .	3
2	Route to hospital, Gunnison, Colorado, site . . . . .	9

### LIST OF ACRONYMS AND ABBREVIATIONS

<u>Acronym</u>	<u>Definition</u>
cm	centimeter
DCO	data collection objective
DOE	U.S. Department of Energy
FORE	field operation readiness evaluation
ft	foot
FTR	field technical representative
m	meter
PRS	project regulatory specialist
RAC	Remedial Action Contractor
SOP	standard operating procedure
TAC	Technical Assistance Contractor
UMTRA	Uranium Mill Tailings Remedial Action
USGS	U.S. Geological Survey

## 1.0 INTRODUCTION

### 1.1 PURPOSE

The purpose of this document is to describe the work that will be performed and the procedures that will be followed during installation of ground water monitor wells and ground water elevation data recorders (data loggers) at the Gunnison, Colorado, Uranium Mill Tailings Remedial Action (UMTRA) Project site. The monitor wells and data loggers will be used to gather required time-dependent data to investigate the interaction between ground water and surface water in the area.

### 1.2 DATA COLLECTION OBJECTIVES

Data collection objectives (DCO) identify reasons for collecting data. The following are DCOs for the Gunnison ground water elevation data recorder/monitor well installation project:

- Long-term continuous ground water level data and periodic ground water samples will be collected to better understand the relationship between surface and ground water at the site.
- Water level and water quality data will eventually be used in future ground water modeling to more firmly establish boundary conditions in the vicinity of the Gunnison processing site.
- Modeling results will be used to demonstrate and document the potential remedial alternative of natural flushing.



## 2.0 MONITOR WELL AND DATA LOGGER INSTALLATION TASKS

### 2.1 MONITOR WELL AND DATA LOGGER LOCATIONS

Seven shallow ground water monitor wells and 14 data loggers will be installed at the site. Data loggers will be installed in six of the new monitor wells and the following eight existing monitor wells (Figure 1): GUN-01-0145, GUN-01-0147, GUN-01-0160, GUN-01-0161, GUN-01-0181, GUN-01-0183, GUN-01-0196, and GUN-01-0197.

The proposed locations of the data loggers on existing wells and proposed monitor wells are discussed below and are shown in Figure 1.

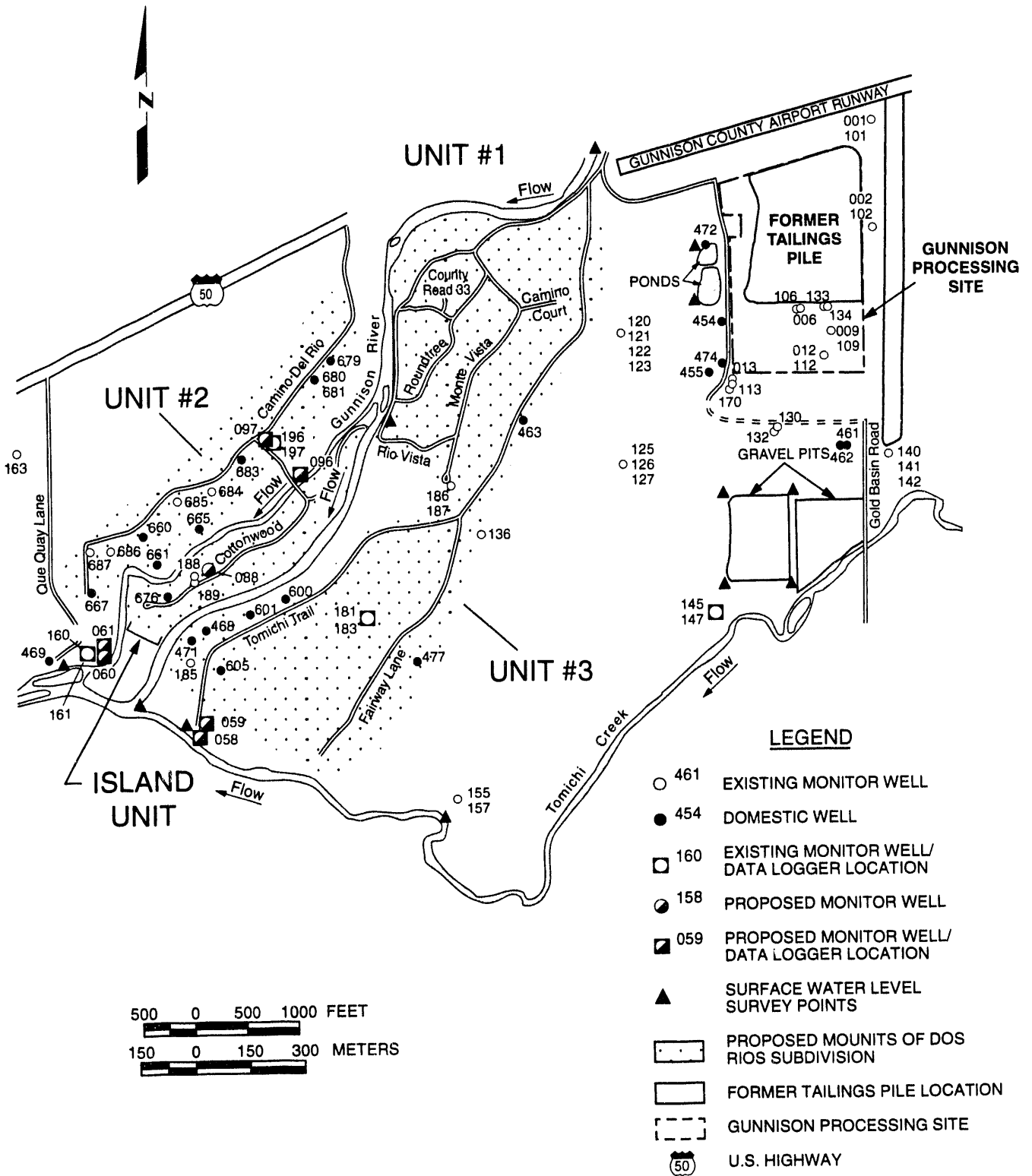
One data logger will be installed in each of wells GUN-01-0145 and -0147 located along Tomichi Creek. The data loggers will provide continuous water-level data to track potential hydrologic effects of seasonal dewatering at Valco, Inc., a cement plant. Ground water level data can also be correlated to surface water data acquired from the Tomichi Creek United States Geological Survey (USGS) gauging station.

One data logger will be installed in each of wells GUN-01-0181 and -0183 located in the Dos Rios subdivision, over 500 feet (ft) (152 meters [m]) "inland" from the Gunnison River.

Two shallow monitor wells will be installed in the vicinity of well cluster GUN-01-160 and -161—one as a stilling well adjacent to the Gunnison River (new well identification number GUN-01-0060), and the other next to the existing monitor well cluster (new well identification number GUN-01-0061). A data logger will be installed in each of these new wells and in the existing well cluster (GUN-01-160 and -161).

Two shallow monitor wells will be installed in the vicinity of well cluster GUN-01-196 and -197—one as a stilling well adjacent to the west fork of the Gunnison River (new well identification number GUN-01-0096), and the other next to the existing well cluster (new well identification number GUN-01-0097). A data logger will be installed in each of these new wells and in the existing well cluster (GUN-01-196 and -197).

One shallow monitor well (new well identification number GUN-01-088) will be installed at the location of existing well cluster GUN-01-188 and -189. This well will provide shallow water-quality data along Cottonwood Lane in the Island Unit of the Dos Rios subdivision. A data logger will not be installed in this well.



**FIGURE 1**  
**PROPOSED MONITOR WELL AND DATA LOGGER LOCATION MAP**  
**IN THE PROCESSING SITE VICINITY, GUNNISON, COLORADO**

Two shallow monitor wells will be installed at the south end of Tomichi Trail—one as a stilling well adjacent to Tomichi Creek (new well identification number GUN-01-058) and the second approximately 100 ft (30.5 m) northeast of Tomichi Creek (new well identification number GUN-01-059). A data logger will be installed in each of these new wells.

Existing monitor well GUN-01-0187 will be repaired. Water samplers reported an obstruction in the well at approximately 8 ft (2.4 m). A data logger will not be installed in this well, but the well is routinely sampled for water quality.

The data loggers will collect six water level measurements per day at 4-hour intervals. Field technicians will download the recorded data to a personal computer and check the data logger for proper operation at approximately 3-month intervals.

## **2.2 PERMITS, CLEARANCES, AND ACCESS AGREEMENTS**

No monitor well permits or access agreements are needed for the installation of data loggers in existing wells. Proposed monitor wells (Figure 1) will require access agreements prior to field work. These new monitor wells will also require monitor well permits.

The Colorado Division of Water Resources will be contacted by the project regulatory specialist (PRS) for permitting information. The PRS will apply for and obtain any necessary permits. Property management will obtain any needed access agreements before any field work is initiated.

## **2.3 SITE CONDITIONS**

Based on field observations during regular ground water sampling, the depth to the water table at all proposed drilling locations is anticipated to be within 10 ft (3 m) of the land surface. Well logs from monitor wells close to the river show that the shallow alluvial aquifer materials consist of medium- to fine-grained, unconsolidated sand and gravel. A high percentage of cobbles and large boulders are present in the alluvial material.

Horizontal ground water flow is to the southwest. The alluvial aquifer is generally unconfined. However, noncontinuous layers of localized low hydraulic conductivity silt and clay may create semiconfined conditions with increasing depth in the alluvium.

## **2.4 WELL AND DATA LOGGER INSTALLATION METHODS**

Because of the heterogeneous nature of the aquifer materials and the presence of cobbles and large boulders, the air rotary casing advance drilling method will be used to install monitor wells at the site. Monitor wells will be installed according to UMTRA Project standard operating procedure (SOP) 14.3.1 (JEG, n.d.). Each shallow well will be approximately 25 ft (7.6 m) deep and consist of approximately

5 ft (2 m) of 4-inch (10 centimeters [cm]) diameter PVC well screen and approximately 20 feet (6 m) of 4-inch (10 cm) diameter PVC casing. Well construction materials and hand-tools will be supplied by a licensed well driller contracted through Jacobs Engineering Group, Inc., the Technical Assistance Contractor (TAC).

Data loggers and pressure transducers will be installed and calibrated in each monitor well following the manufacturer's instructions. Data loggers will be suspended in the monitor well for approximately 30 minutes to allow for cable stretch and proper temperature equilibration between the ground water and data logger. Proper data logger operation will be verified by comparing the water level reading given by the data logger to the actual water level reading determined with a water level probe. Length of transducer cable will vary depending on depth to water and anticipated water level fluctuations in the monitor well. Existing ground water data, such as depth to water and historical water level fluctuations, will be reviewed to ensure data loggers and pressure transducers are installed so that the instruments operate properly throughout the year.

To verify proper data logger operation, data loggers will be checked after installation by field personnel. Approximately two weeks after installation, data logger operation will again be verified by field personnel. Once proper data logger operation is ensured, data will be downloaded at approximately 3-month intervals.

In addition to the SOPs mentioned above, the following applicable SOPs (JEG, n.d.) will be followed during monitor well and data logger installation:

- 14.1.2 Instructions for Field Technical Representative
- 14.1.3 Drilling and Test Pit Technical Representative
- 14.1.4 Verification of Grout Mix for Monitor Wells
- 14.1.5 FTR Daily Diary
- 14.1.6 Procedures for Completing the Daily Field Activity Report
- 14.1.7 Field/Off-Site Procurement of Supplies & Services
- 14.3.1 Drilling Procedures
- 14.4.1 Soil and Rock Core Borehole and Test Pit Logging
- 14.4.2 Preparation of Logs for UMTRAP Documents
- 16.1.1 Monitor Well Installation
- 16.1.2 Well Development

- 16.1.19 Permitting Procedures for Installation or Decommissioning of Monitor Wells
- 16.1.22 Controlled Disposal of Potentially Contaminated Materials or Memorandum from Don Metzler to Clinton Smythe entitled "Evaluating Drill Cuttings and Well Development and Purge Waters"
- 17.4.1 Location ID for Test Borings, Test Pits, and Monitoring Locations

Internal communications will be maintained between the field representatives, site hydrogeologists, the TAC contracting department, property management, site manager, and the U.S. Department of Energy (DOE). Before any installation of monitor wells or data loggers occurs the Remedial Action Contractor (RAC) site manager will be notified of the upcoming activities, and the work party will check in with the RAC.

## **2.5 WELL DEVELOPMENT**

No sooner than 48 hours after well completion, the well will be developed per UMTRA Project SOP 16.1.2 (JEG, n.d.) until the discharge is clear. The amount of water removed and approximate well yields will be recorded. The appropriate procedures will be followed to ensure proper disposal of development water.

## **2.6 SURVEYING**

Once the monitor wells have been installed they will be surveyed by a local surveying contractor to establish top-of-casing elevation and Colorado state plane coordinates. Surface elevations of nearby surface water bodies will be surveyed. Survey locations will include, but not be limited to, upstream and downstream locations on the Gunnison River and Tomichi Creek, the campground pond, and Valco, Inc. gravel pits. New monitor well top-of-casing and surface water body elevations will be surveyed to the nearest 0.01 ft (3 millimeters).

## **2.7 WATER SAMPLING AND ANALYSIS**

No water quality samples will be taken at this time, although the wells may be sampled in the future.

## **2.8 SITE RESTORATION**

Moderate site disturbance is anticipated. However, areas of disturbed soil will be raked smooth by hand, all trash will be collected immediately, and established roadways and paths will be used whenever possible.

## 2.9 FIELD DOCUMENTATION

In addition to the daily diary kept by the field technical representative (FTR) the following documentation will be compiled and data collected:

- The monitor well locations will be photographed and located on a map. The elevations of the top-of-casing for each well point and the surface water elevations will be surveyed by the surveying subcontractor.
- Surface water elevation measuring points at the edge of the Gunnison River will be surveyed with respect to the top-of-casing of the nearest new monitor well.
- Water-level measurements at each new well and from each existing monitor well will be recorded at least once just before the data loggers are set to begin logging in the wells.
- Proper functioning of the data loggers will be verified by recording the depth to water as reported by the data logger and a water level probe.

Copies of all pertinent field documentation will be maintained in the UMTRA Project Document Control Center.

## 2.10 ANTI-CONTAMINATION MEASURES

Before being taken onto the site, all well installation materials, including the drill rig, will be cleaned to the FTR's satisfaction as required. The TAC FTR will inspect equipment for the presence of hydraulic oil or grease, and, if necessary, the equipment will be steam cleaned to remove such material. The wells will be drilled in areas of lowest to highest ground water contamination to minimize rig decontamination. The drilling rig will be steam cleaned prior to moving to the next drilling location.

### 3.0 HEALTH AND SAFETY

#### 3.1 LOCAL CONTINGENCIES AND CONTACTS

All personnel involved with monitor well and data logger installation will have the following equipment:

- Hard hat
- Steel-toed boots
- Safety glasses
- Work gloves
- Sunblock lotion
- Fresh drinking water

The following items will be on the site:

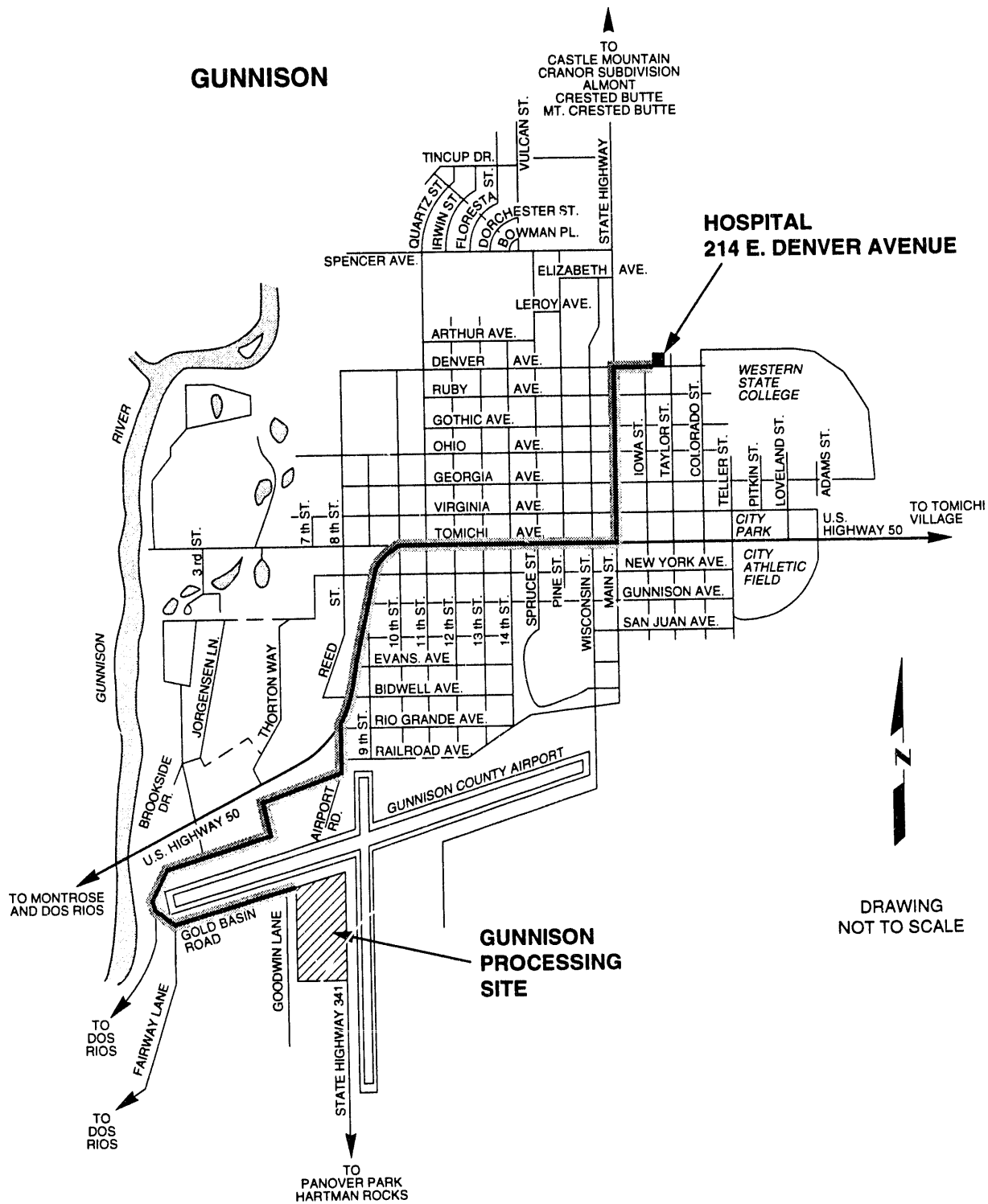
- First-aid kit
- Fire extinguisher

The location of the nearest hospital in case of emergency is Gunnison Valley Hospital (303-641-1456) located at 214 E. Denver Avenue, Gunnison, Colorado (Figure 2). The phone number for all emergencies is 911.

#### 3.2 HEALTH AND SAFETY AUDITS

The FTR will be responsible for observing that subcontractor personnel work activities are in compliance with UMTRA Project health and safety requirements and that Occupational Safety and Health Administration codes 29 CFR Parts 1910 and 1926 (1994) are followed during all phases of well installation. The applicable SOPs (JEG, n.d.) are as follows:

- 7.3.1 Occupational Safety and Health Complaints
- 7.3.2 Occupational Safety and Health Complaints for TAC Subcontractors
- 14.1.2 Instructions for Field Technical Representative



**FIGURE 2  
ROUTE TO HOSPITAL  
GUNNISON, COLORADO, SITE**



#### 4.0 WELL AND DATA LOGGER INSTALLATION TASK SCHEDULE

The activities discussed in this work plan are part of a larger effort to install new monitor wells and data loggers at the Gunnison, Rifle, and Grand Junction sites. The same drilling contractor will be used at all three Colorado sites. To minimize mobilization fees, the drilling contractor, upon completion of well installation procedures, will move directly to the next site. Drilling operations will start at the Gunnison site then move to Rifle and finish at Grand Junction.

The tasks and accompanying tentative completion dates for this work plan are as follows:

<u>Task</u>	<u>Completion</u>
Equipment procurement	August 18
Award drilling subcontract	August 21
Conduct field operation readiness evaluation (FORE)	August 26
Install wells	September 17
Survey wells and river	September 19
Install data loggers	September 26
Check data logger operation	November 2

---

## 5.0 REFERENCES

JEG (Jacobs Engineering Group Inc.), n.d. *Albuquerque Operations Manual*, standard operating procedures, prepared by Jacobs Engineering Group Inc., Albuquerque, New Mexico, for the U.S. Department of Energy, UMTRA Project Office, Albuquerque Operations Office, Albuquerque, New Mexico..

### CODE OF FEDERAL REGULATIONS

29 CFR Part 1910, *Occupational Safety and Health Standards*, Occupational Safety and Health Administration, Department of Labor (1994).

29 CFR Part 1926, *Safety and Health Regulations for Construction*, Occupational Safety and Health Administration, Department of Labor (1994).

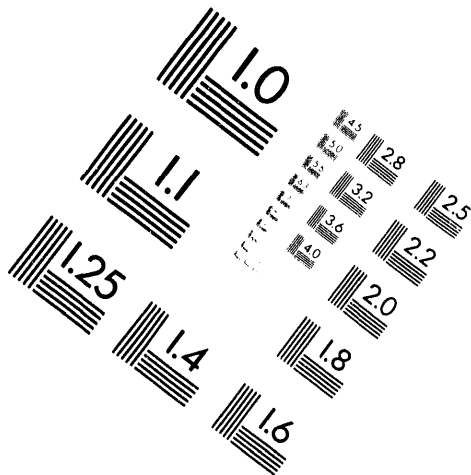
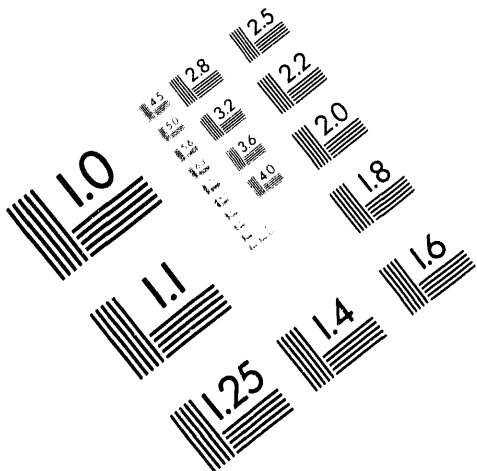


**AIM**

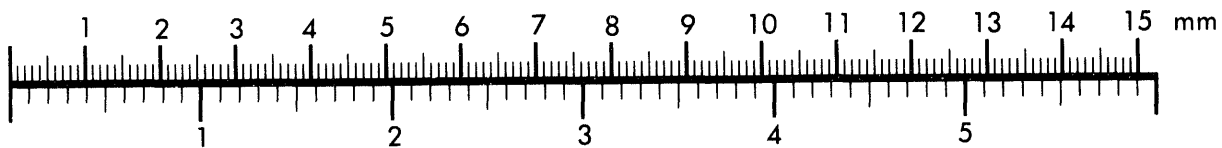
**Association for Information and Image Management**

1100 Wayne Avenue, Suite 1100  
Silver Spring, Maryland 20910

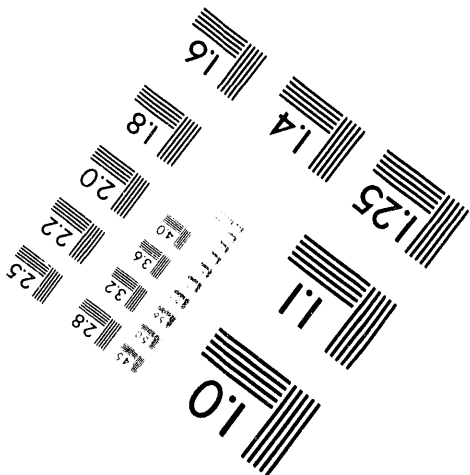
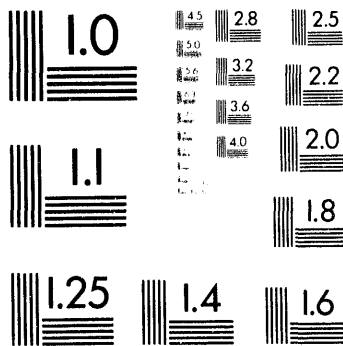
301/587-8202



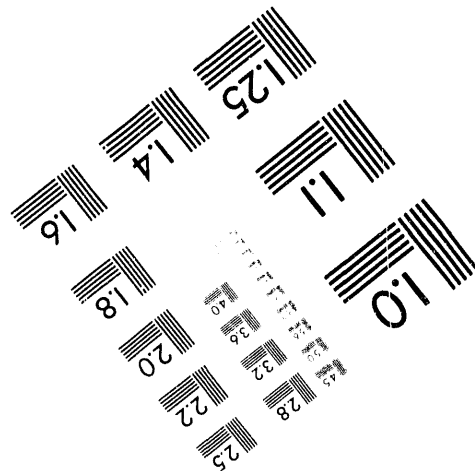
Centimeter



Inches



MANUFACTURED TO AIM STANDARDS  
BY APPLIED IMAGE, INC.





**DATE**

**FILMED**

12 / 5 / 94

**END**