

**SUPPLEMENT TO THE
UMTRA PROJECT WATER SAMPLING AND ANALYSIS PLAN
MONUMENT VALLEY, ARIZONA**

RECEIVED
OCT 10 1995
OSTI

September 1995

Prepared for
U.S. Department of Energy
Environmental Restoration Division
UMTRA Project Team
Albuquerque, New Mexico

Prepared by
Jacobs Engineering Group Inc.
Albuquerque, New Mexico

DISCLAIMER

This report was prepared as an account of work sponsored by an agency of the United States Government. Neither the United States Government nor any agency thereof, nor any of their employees, makes any warranty, express or implied, or assumes any legal liability or responsibility for the accuracy, completeness, or usefulness of any information, apparatus, product, or process disclosed, or represents that its use would not infringe privately owned rights. Reference herein to any specific commercial product, process, or service by trade name, trademark, manufacturer, or otherwise does not necessarily constitute or imply its endorsement, recommendation, or favoring by the United States Government or any agency thereof. The views and opinions of authors expressed herein do not necessarily state or reflect those of the United States Government or any agency thereof.

DISTRIBUTION OF THIS DOCUMENT IS UNLIMITED

MASTER

DISCLAIMER

Portions of this document may be illegible in electronic image products. Images are produced from the best available original document.

1.0 INTRODUCTION

This water sampling and analysis plan (WSAP) supplement supports the regulatory and technical basis for water sampling at the Monument Valley, Arizona, Uranium Mill Tailings Remedial Action (UMTRA) Project site in Cane Valley, as defined in the 1994 WSAP document for Monument Valley (DOE, 1994). Further, the supplement serves to confirm our present understanding of the site relative to the hydrogeology and contaminant distribution as well as our intention to continue to use the sampling strategy as presented in the 1994 WSAP document for Monument Valley.

2.0 GROUND WATER AND SURFACE MONITORING

Ground water and surface water monitoring activities are derived from the U.S. Environmental Protection Agency regulations in 40 CFR Part 192 (1991) and 60 FR 2854 (1995). Sampling procedures are guided by the UMTRA Project standard operating procedures (JEG, n.d.), the Technical Approach Document (DOE, 1989), and the most effective technical approach for the site. Additional site-specific documents relevant to the Monument Valley site are the Baseline Risk Assessment for Groundwater Contamination at the Uranium Mill Site Near Monument Valley, Arizona (DOE, 1993), and the Monument Valley Site Observational Work Plan (currently in progress).

3.0 SAMPLING PLAN

The sampling plan, as described in the 1994 WSAP, is to continue periodic (twice a year) monitoring of the site ground and surface water to continue to evaluate site characteristics and water quality changes caused by tailings removal. Sampling events are scheduled to occur during times representational of high ground water levels and low ground water levels. Over the next five years, it is expected that this sampling strategy will continue to be used to increase our understanding of the site. The last sampling event occurred in April 1995, during a period of high ground water levels. The next scheduled sampling event is in November 1995, a time typically characterized by low ground water levels.

The following locations will be sampled at the Monument Valley site in November 1995 (Figure 1):

- DOE monitor wells 650, 662, 606, 609, 659, 614, 618, 619, 657, and 663.
- Domestic wells 616, 617, 640, 613, and 625.
- Surface water locations 623, 624, 626, and 627.

The following constituents will be analyzed for: ammonium, nitrate, strontium, sulfate, vanadium, uranium, calcium, chloride, magnesium, manganese, potassium, and sodium.

Field analyses will be conducted for alkalinity, dissolved oxygen, oxidation/reduction potential, pH, specific conductance, and temperature.

4.0 REFERENCES

- DOE (U.S. Department of Energy), 1994. *UMTRA Project Water Sampling and Analysis Plan Monument Valley, Arizona*, final, UMTRA-DOE/AL 6250-122, prepared by the U.S. Department of Energy, UMTRA Project Office, Albuquerque Operations Office, Albuquerque, New Mexico, April, 1994.
- DOE (U.S. Department of Energy), 1993. *Baseline Risk Assessment for Groundwater Contamination at the Uranium Mill site Near Monument Valley, Arizona*, DOE/AL/62350-43D, prepared by the U.S. Department of Energy, UMTRA Project Office, Albuquerque Operations Office, Albuquerque, New Mexico, 1993.
- DOE (U.S. Department of Energy), 1989. *Technical Approach Document*, UMTRA-DOE/AL-050425.0002, prepared by the U.S. Department of Energy, UMTRA Project Office, Albuquerque Operations Office, Albuquerque, New Mexico.
- JEG (Jacobs Engineering Group, Inc.), n.d. *Albuquerque Operations Manual*, standard operating procedures, prepared by Jacobs Engineering Group, Inc., Albuquerque, New Mexico, for the U.S. Department of Energy, UMTRA Project Office, Albuquerque Operations Office, Albuquerque, New Mexico.

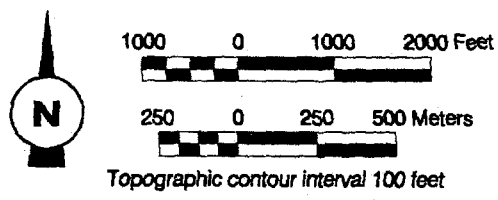
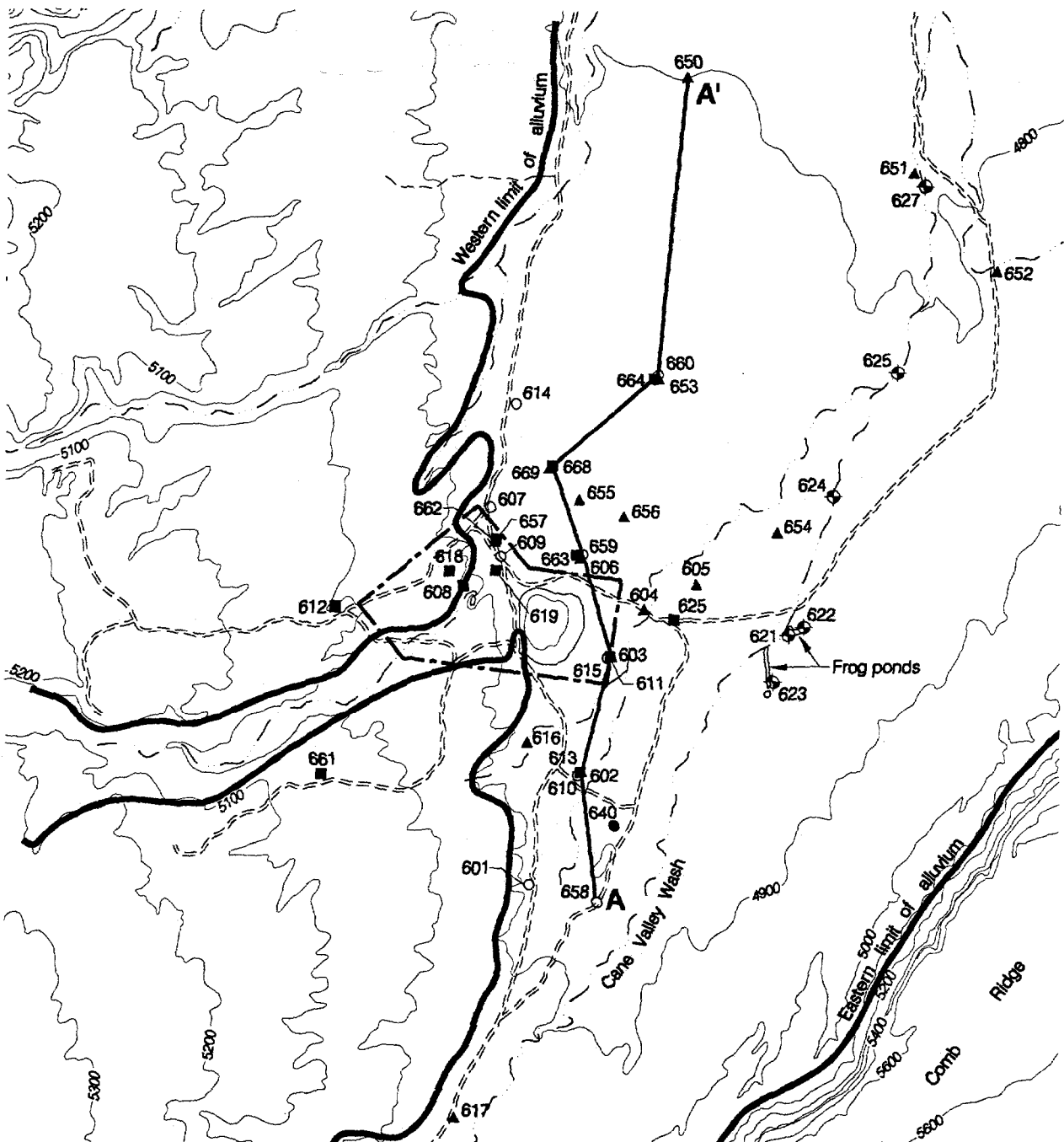
CODE OF FEDERAL REGULATIONS

- 40 CFR Part 192, *Health and Environmental Protection Standards for Uranium and Thorium Mill Tailings*, U.S. Environmental Protection Agency (1991).

FEDERAL REGISTER

- 60 FR 2854, *Groundwater Standards for Remedial Action at Inactive Uranium Processing Sites*, Final Rule, U.S. Environmental Protection Agency, 11 January 1995.

Figure 1
Monitor Well and Surface Sampling Locations
And Locations of Geologic Cross Sections
Monument Valley, Arizona, Site



Legend			
654 ▲	Alluvial monitor well	625 ⊕	Surface water sampling location
608 ■	De Chelly monitor well	- - - -	Disposal site boundary
658 ○	Shinarump monitor well	⋯⋯⋯	Dirt road
640 ●	Domestic well	- - - -	Intermittent stream
- - - -	4wd trail	⋯⋯⋯	Contour elevation

PC: H:\USER\SSUN\GAMONUMENT\WSAP\WML\GCSF1.DWG (REF: SITEMAP.DWG/SOWP) 9-7-95